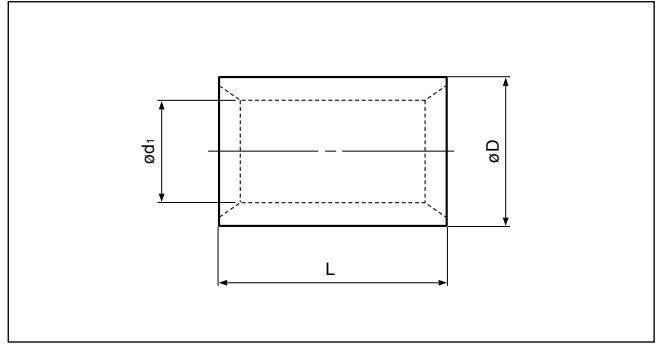


Solderless splices

PARALLEL

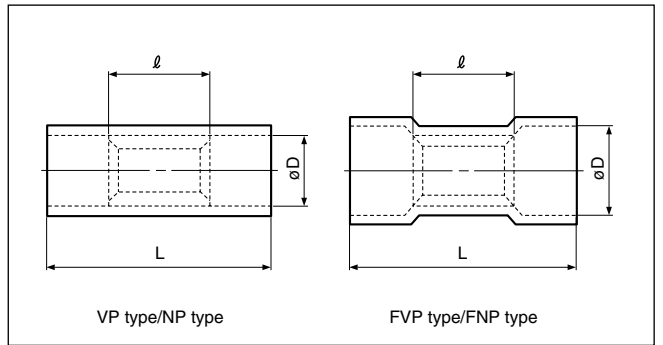
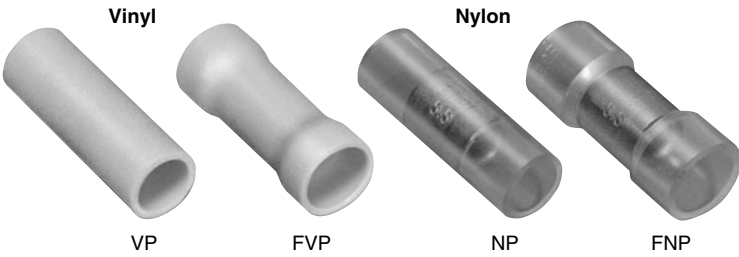


Non-insulated

Certificate No.: E42024 LR20812 JQ0607002

Applicable Wire AWG#(mm ²)	Part No.	Standard	Dimensions mm (in.)			Tool No.											Qty/box											
			L	ø D	ø d1	YHT-2210	YHT-8S	YA-1	YA-2	YA-4	YA-5	YPT-60N	YPT-150-1	BCT-0514	BCT-860N	BCT-8150		YET-60-1	YET-150-1	YET-300-1	YET-300N							
22 to 16 (0.25 to 1.65)	P-1.25		8.0 (.315)	3.3 (.130)	1.7 (.067)	0		0	0	0				0												1,000		
16 to 14 (1.04 to 2.63)	P-2		8.0 (.315)	4.1 (.161)	2.3 (.091)	0		0	0	0				0														
12 to 10 (2.63 to 6.64)	P-5.5		8.5 (.335)	5.4 (.213)	3.4 (.134)	0		0	0	0				0														
8 (6.64 to 10.52)	P-8		9.5 (.374)	7.0 (.276)	4.5 (.177)		0			0	0	0	0	0	0	0	0	0	0	0	0	0	0	0	0		0	500
6 (10.52 to 16.78)	P-14		11.0 (.433)	8.9 (.350)	5.8 (.228)					0	0	0	0	0	0	0	0	0	0	0	0	0	0	0	0		0	200
4 (16.78 to 26.66)	P-22		13.5 (.531)	11.3 (.445)	7.7 (.303)						0	0	0		0	0	0	0	0	0	0	0	0	0	0		0	100
2 (26.66 to 42.42)	P-38		16.5 (.650)	13.2 (.520)	9.4 (.370)						0	0	0		0	0	0	0	0	0	0	0	0	0	0		0	
1/0 (42.42 to 60.57)	P-60		19.0 (.748)	15.3 (.602)	11.4 (.449)						0	0	0		0	0	0	0	0	0	0	0	0	0	0		0	
2/0 (60.57 to 76.28)	P-70			19.0 (.748)	17.5 (.689)	13.3 (.524)						0			0							0	0	0	0		0	50
3/0 (76.28 to 96.3)	P-80			19.5 (.768)	19.5 (.768)	14.5 (.571)						0				0							0	0	0		0	0
4/0 (96.3 to 117.2)	P-100	20.0 (.787)		22.1 (.870)	16.4 (.646)						0				0							0	0	0	0	0		
250 to 300MCM (117.2 to 152.05)	P-150	27.0(1.063)		26.4(1.039)	19.5 (.768)						0				0							0	0	0	0	0	25	
350MCM (152.05 to 192.6)	P-180		28.5(1.122)	28.5(1.122)	21.0 (.827)																	0	0			20		
400MCM (192.6 to 242.27)	P-200		32.0(1.260)	32.4(1.276)	24.0 (.945)																		0	0				
600 to 650MCM (242.27 to 325)	P-325		37.0(1.457)	37.0(1.457)	28.0(1.102)																			0	0			

Note:1) Products with the JIS mark conform to JIS C2806.
 2) "Applicable Wires" indicates the total cross-sectional area.
 3) Delivery lead times may vary depending on the product. Contact JST for details.



Vinyl or nylon insulated

Certificate No.: E42024 LR20812

Applicable Wire AWG#(mm ²)	Part No.		Standard	Dimensions mm (in.)			Color	Tool No.							Qty/box											
	Vinyl	Nylon		L	ℓ	ø D		YNT-2216	YNT-1614	YNT-1210S	YA-1	YA-2	YA-4	BCT-0514	Vinyl	Nylon										
22 to 16 *(0.25 to 1.65)	VP-1.25	NP-1.25		16.0 (.630)	8.0 (.315)	3.2 (.126)	0																			
	FVP-1.25	FNP-1.25				4.0 (.157)																				
16 to 14 (1.04 to 2.63)	VP-2	NP-2		16.0 (.630)	8.0 (.315)	3.9 (.154)	0																			
	FVP-2	FNP-2				4.5 (.177)																				
12 to 10 (2.63 to 6.64)	VP-5.5	NP-5.5		20.5 (.807)	8.5 (.335)	5.4 (.213)	0																			
	FVP-5.5	FNP-5.5				6.8 (.268)																				

Note:1) *The crimping will be more secure if the total cross-sectional area of the wire is at least 0.5 mm².
 Examples: If the cross-sectional area of the wire is 0.3mm², fold the wire in two when crimping the terminal.
 If the cross-sectional area of the wire is 0.5mm², crimp the terminal onto the wire as it is.
 2) "Applicable Wires" indicates the total cross-sectional area.
 3) Delivery lead times may vary depending on the product. Contact JST for details.

Wire combination table for parallel splices specified by UL

AWG#	↓ Number of wires												P-1.25											
22	2	2	2	1	1	1	1	1	1	1	1	1	1	1	1	1	1	1	1	1	1	1		
20	1			2	1	1							3	2	1									
18		1			1		1								1	2								
16												1												
AWG#	↓ Number of wires												P-2											
22	2	2	2	2	1	1	1	1	1	1	1	1	1	1	1	1	1	1	1	1	1	1		
20	1				2	1	1	1	1						3	2	2	2	1	1	1	1		
18		1				1							2	1	1						3	2		
16			1										1		1						1	1		
AWG#	↓ Number of wires												P-5.5											
18	2	1	1	1	1	1																		
16		1					2	1	1	2														
14			1						1															
12				1						1														
10					1																			
AWG#	↓ Number of wires												P-8											
16		1																						
14			1																					
12	2			1																				
10		1	1	1																				
AWG#	↓ Number of wires												P-14											
14		1																						
12			1																					
10	2																							
8		1	1																					
AWG#	↓ Number of wires												P-22											
10		1																						
8	2		1																					
6		1	1																					
AWG#	↓ Number of wires												P-38											
8		1																						
6	2																							
4		1																						
AWG#	↓ Number of wires												P-60											
6		1																						
4	2																							
2		1																						
AWG#	↓ Number of wires												P-70											
6		1																						
2	2																							
1/0		1																						
AWG#	↓ Number of wires												P-80											
4	1																							
2/0	1																							
AWG#	↓ Number of wires												P-100											
2	1																							
2/0	1																							
AWG#	↓ Number of wires												P-150											
2		1																						
1/0			1	1																				
2/0	2		1																					
3/0		1		1																				
AWG#	↓ Number of wires												P-180											
1/0		1																						
2/0			1	1																				
3/0	2			1																				
4/0		1	1																					
AWG#	↓ Number of wires												P-200											
2/0			1																					
3/0		1																						
4/0	2	1																						
250/MCM			1																					
AWG#	↓ Number of wires												P-325											
4/0	1																							
250/MCM		2																						
300/MCM	1																							